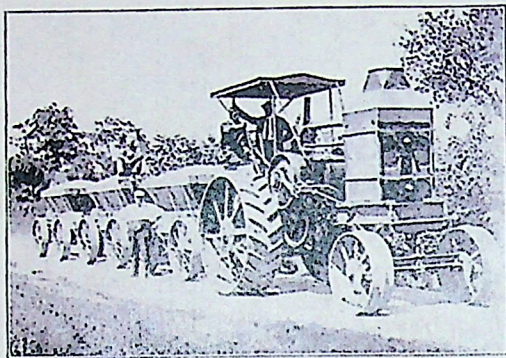


THE 15-30 *Old* —15 TRACTIVE—30 BRAKE H. P.
The "Corn Belt" Tractor

Our agriculture must now become more intensive. Cultivation of the soil must be more thorough, and this requires more power. Forage plants must be chopped, corn shredded and shelled, water supplied in abundance, in addition to threshing work. All this calls for engine power.



In many districts great advantage can be gained from deep plowing in liberating the fertility of new soil. Discing and thorough harrowing prepare a good seed-bed, and pulverize the soil so as to retain moisture. For the best returns, it is not

only important that these operations be done, but that they be done at exactly the right time.

The advantage of an engine on the small farm is that it can be worked long hours and that a large area can be covered when the work will pay the biggest profits.

Many farmers in the Central States are just beginning to recognize that animal power is slow, and that the greater number of horses required by the newer methods of farming increases expense and necessitates setting aside some of the most valuable land for raising their hay and grain feed.

Our 15-30 Corn Belt Tractor develops 30 horsepower in the brake and 15 in its drawbar. This tractor was designed especially to meet general needs of the smaller corn-belt farms, and also for use in the Northwest for discing,



seeding, harvesting, hauling and similar lighter operations. It usually pulls 4 bottoms in breaking; 4 to 6 in stubble. The 15-30 tractor will run any size separator up to 32-inch in good grain, and operate a husker, sheller, shredder, or any similar machinery.